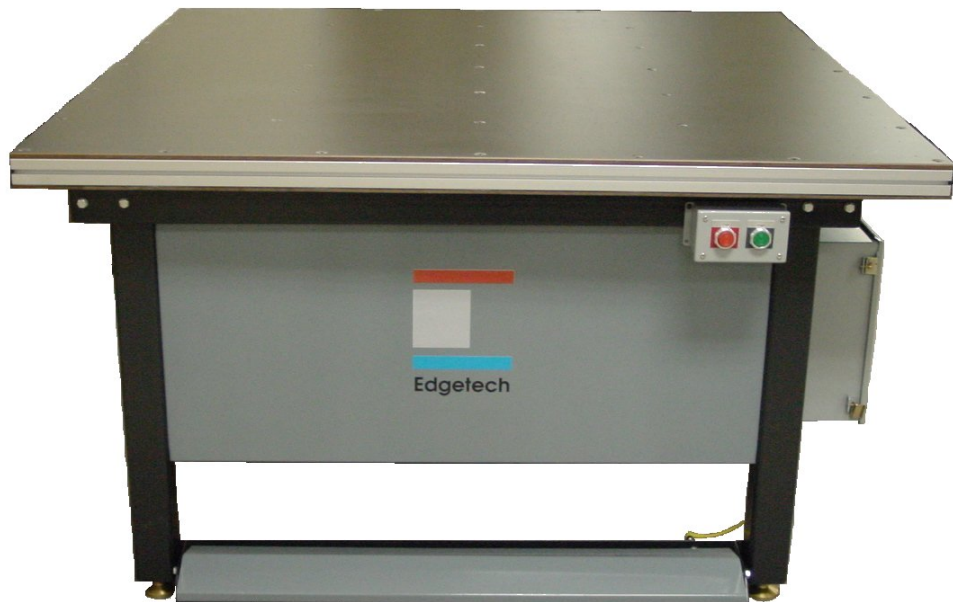


Edgetech

Suction Table

60" X 60"



Model 3400
Instruction Manual

Suction Table Manual Index

Section 1 Setup

- 1-1 Compressed Air (100psi)
- 1-2 120 VAC,20 Amps
- 1-3 Adjust Foot Pedal Height
- 1-4 Adjust Leveling Feet

Section 2 Operation

- 2-1 Foot Pedal Operation
- 2-2 Application

Section 3 Maintenance

- 3-1 Maintenance Schedule
- 3-2 Check Filter/Regulator
- 3-3 Check Blower Filter

Section 4 Parts

- 4-1 Replacement Parts and Diagrams

Parts List

Quality Check List

Section 1 - Setup

Requirements

- 1-1 Compressed Air (100psi).
- 1-2 120 VAC 20 Amps.
- 1-3 Adjust Foot Pedal Height
- 1-4 Adjust leveling feet.

1-1 Compressed Air

1. Supply 100-psi compressed air to the IN port on the filter/regulator. The IN port on the filter/regulator is a ½" NPT hole. See **Figure 1a**.
2. Adjust the pressure by pulling the knob up and then turning.
 - a. Clock-wise will increase pressure.
 - b. Counter-clock-wise will relieve the pressure.
3. Adjust the pressure to 100-psi and push knob down to disengage the pressure adjustment.

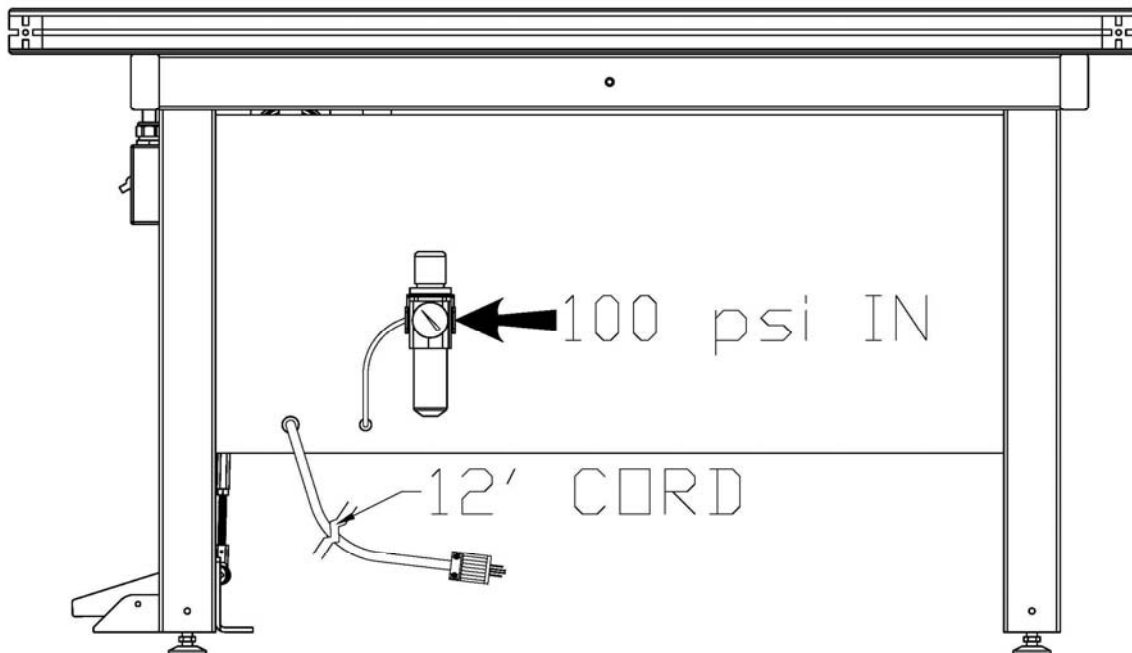


Figure 1a

Section 1 - Setup

1-2 VAC

1. Plug Suction Table into a 120 VAC, 20A outlet.

1-3 Adjust Foot Pedal Height

1. To adjust the foot pedal height you need to loosen the 3/8-16 bolts on the back of the front legs. See **Figure 1b**
2. The foot pedal tie-rod also needs adjusted.
 - a. Loosen the lock nuts on the tie rod assembly. See **Figure 1b**
 - b. Turn coupling nut to lengthen or shorten the assembly. See **Figure 1b**
3. Retighten all nuts and bolts when foot pedal is in desired position.

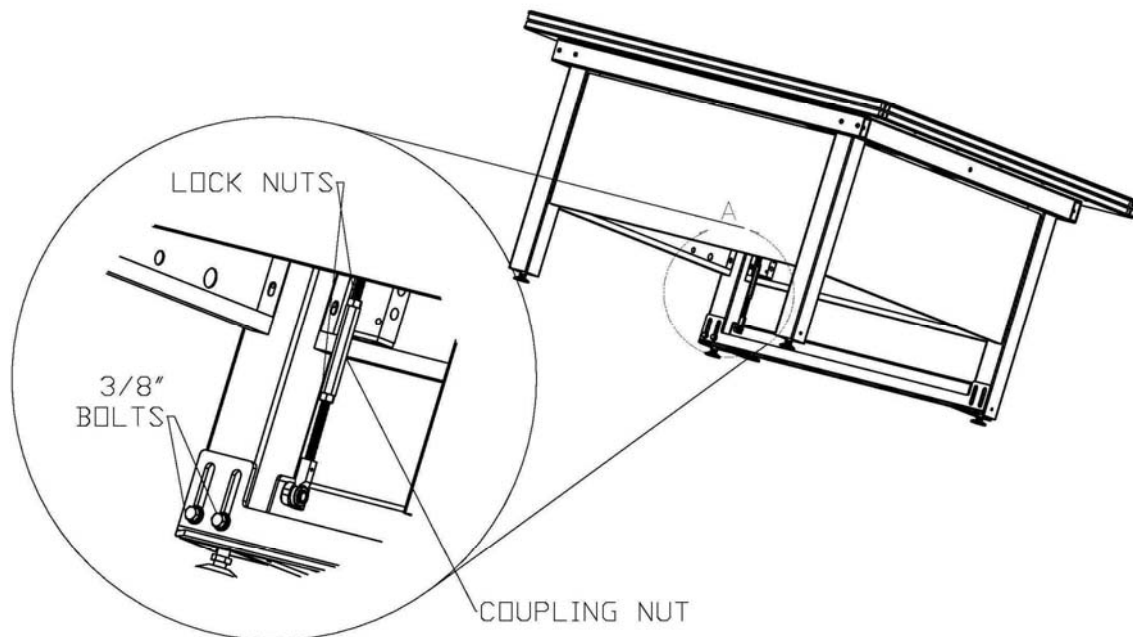


Figure 1b

1-4 Adjust Leveling Feet.

Leveling feet are screwed all the way in for shipping purposes. You need to adjust the feet out to accommodate your desired line height. The Airfloat Table height is adjustable from 34-1/2" to 37-1/2" from the ground to the top of the table surface.

Section 1 - Setup

Tools Required

1. 7/8" wrench
2. 15/16" wrench

Bottom nut raises and lowers the table. (7/8" wrench)

- a. To raise the table, turn in clock-wise direction.
- b. To lower the table, turn counter-clock-wise.

Top nut locks the leveler into position. (15/16" wrench)

- a. To lock, turn counter-clock-wise.
- b. To unlock, turn clock-wise.

1. Move table into desired operating position.
2. Adjust table to desired height.
3. Make sure table is level.
4. Lock leveling feet.

Section 2 – Operation

2-1 Foot Pedal Operation

1. The Foot Pedal is connected to a valve via a tie rod
2. With the table on and blowing press down on the front of the pedal to switch to vacuum. **Figure 2a.**
3. From vacuum press down on the back side of the pedal to switch back to airfloat. **Figure 2a.**

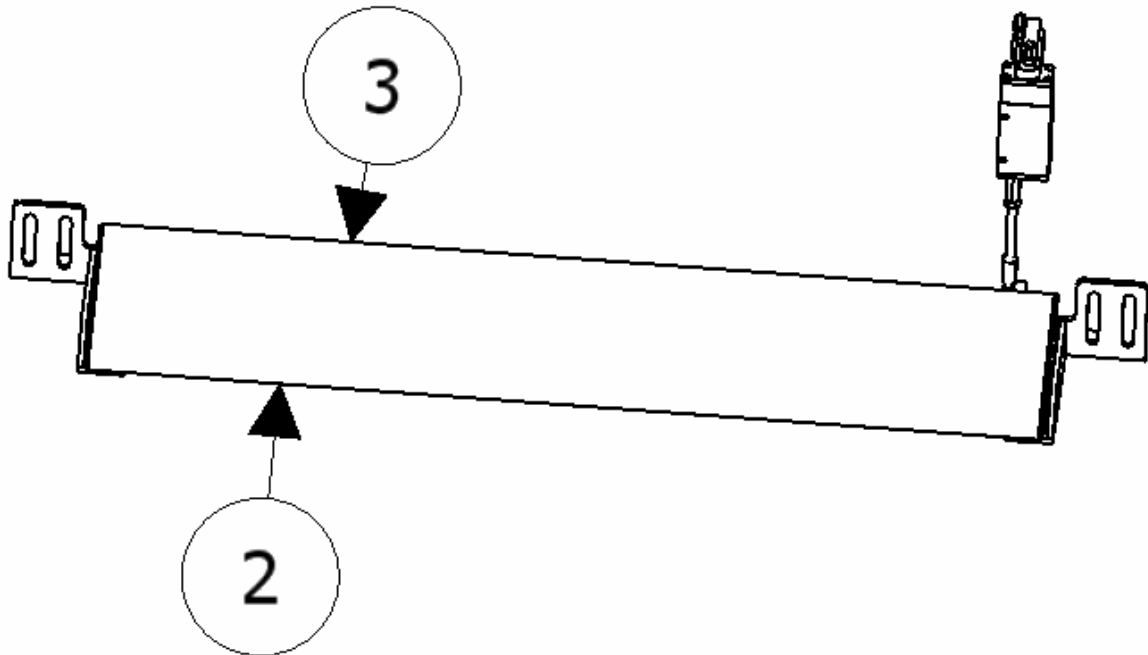


Figure 2a

2-2 Application

1. Turn table on and make sure it is providing air floatation.
2. Float a lite of glass on to the table and position it. **Figure 2b**
3. Step on the front of the foot pedal
4. Apply Super Spacer to the edge of the glass.
5. Step on the backside of the foot pedal and rotate glass.
6. Repeat steps 3-5 until Super Spacer is applied all around the unit
7. Pass the glass along to the next station.

Section 2 – Operation

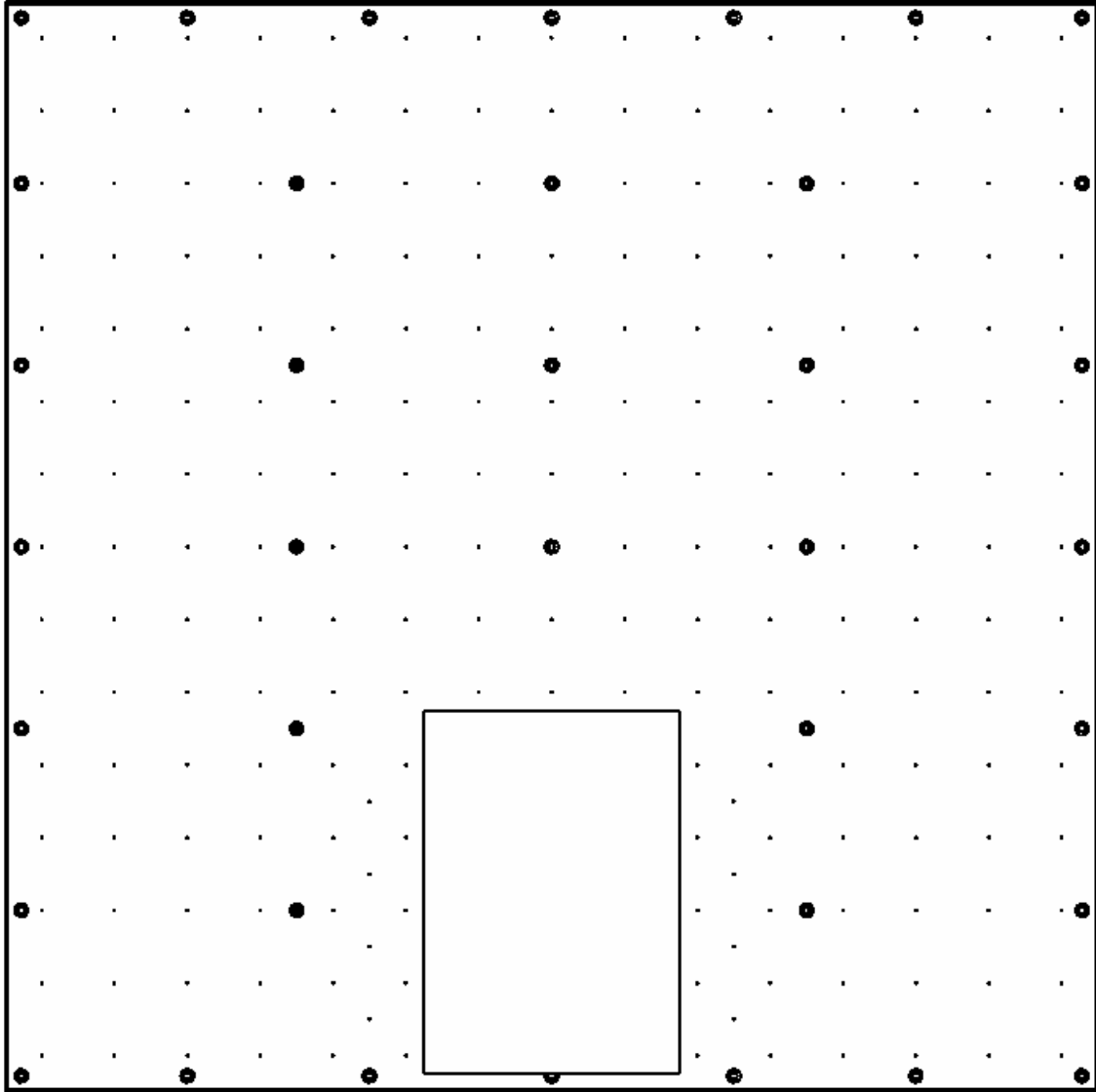


Figure 2b

Section 3 – Maintenance

3-1: Maintenance Schedule

Item	Description	Frequency	Section
1	Clean Top Surface	2-3 Times Daily	
2	Check Filter/Regulator	Daily	3-2
3	Check Blower Filter	Weekly	3-3

3-2: Check Filter/Regulator

The Filter/Regulator is located on the right side of the Suction Table. See **figure3a**.

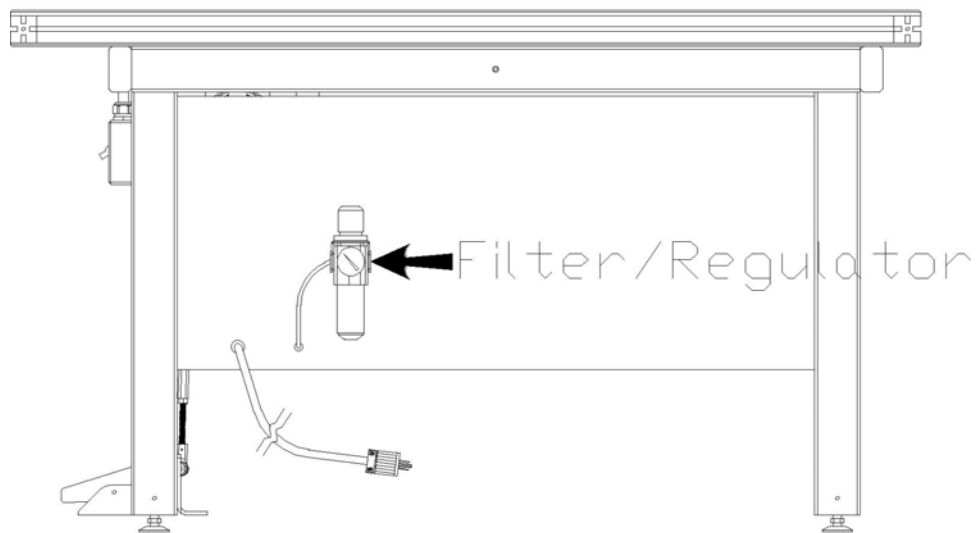


figure 3a

The main purpose of the filter/regulator is to filter excess moisture that may be present in the compressed air supply. It is also used to regulate the pressure to the Suction Table for optimal performance.

1. Check the fluid level in the Filter/Regulator bowl. The bowl is the cup on the bottom of the Filter/Regulator with the sight glass.
2. If there is fluid present it needs to be relieved.
3. This is possible by turning the relief tab on the bottom of the bowl.
 - a. Horizontal = **closed**
 - b. Vertical = **open**

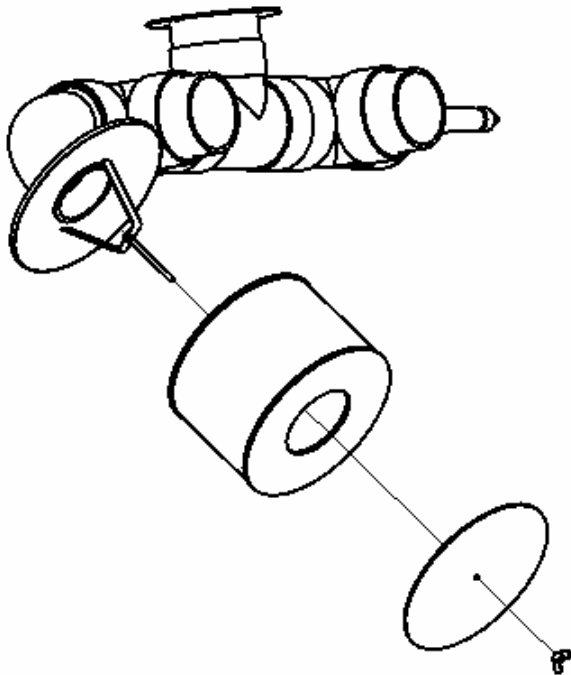
Section 3 – Maintenance

- ❖ If you open the relief valve with the Filter/Regulator hooked up to an air supply then the bowl will be pressurized and the liquid will spray out.
 - ❖ To minimize this you can turn the pressure on the Filter/Regulator down or you can disconnect the air supply. **See Section 1-1.**
 - ❖ You can remove the bowl (with air disconnected) and dump the liquid out.
 1. Push up on bowl and turn clock-wise (about 45 degrees).
 2. Pull down and dump out the liquid.
 3. Replace bowl in the same position.
 4. Push up and turn counter-clock-wise to lock into place
4. Make sure the pressure is set around 100 psi. For help adjusting see **Section 1-1.**

3-3 Check Blower Filter

The blower filter should be replaced every 480 hours of operation.

NOTE: The filter may need replaced more often depending on the cleanliness of the operating environment.



1. The blower filter is located on the right side of the blower valve under the suction table.
2. Check for excessive dirt and any tears in the filter material.
3. If it is too dirty or torn replace with a new one. **Part# E-99000139**

Section 4 – Replacement Parts

3-1: Replacement Parts with Diagrams

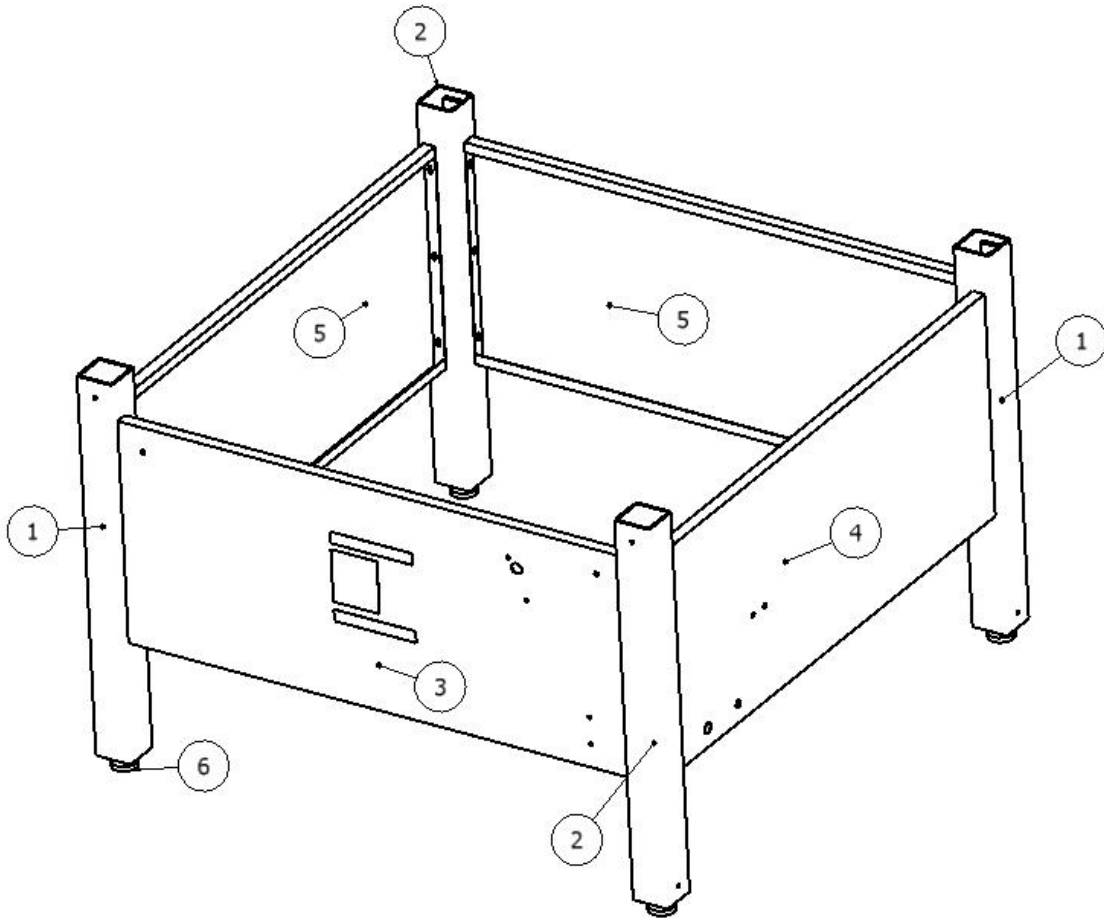


Figure 4 a

Parts List

Item	Description	Part Number	QTY
1	Leg, Front Left, Rear Right	E-30006000	2
2	Leg, Front Right, Rear Left	E-30006001	2
3	Panel ,Front	E-34001005	1
4	Panel Side Modified	E-34001006	1
5	Panel Side	E-34001006	2
6	Pad, Leveling	E-99800019	4

Section 4 – Replacement Parts

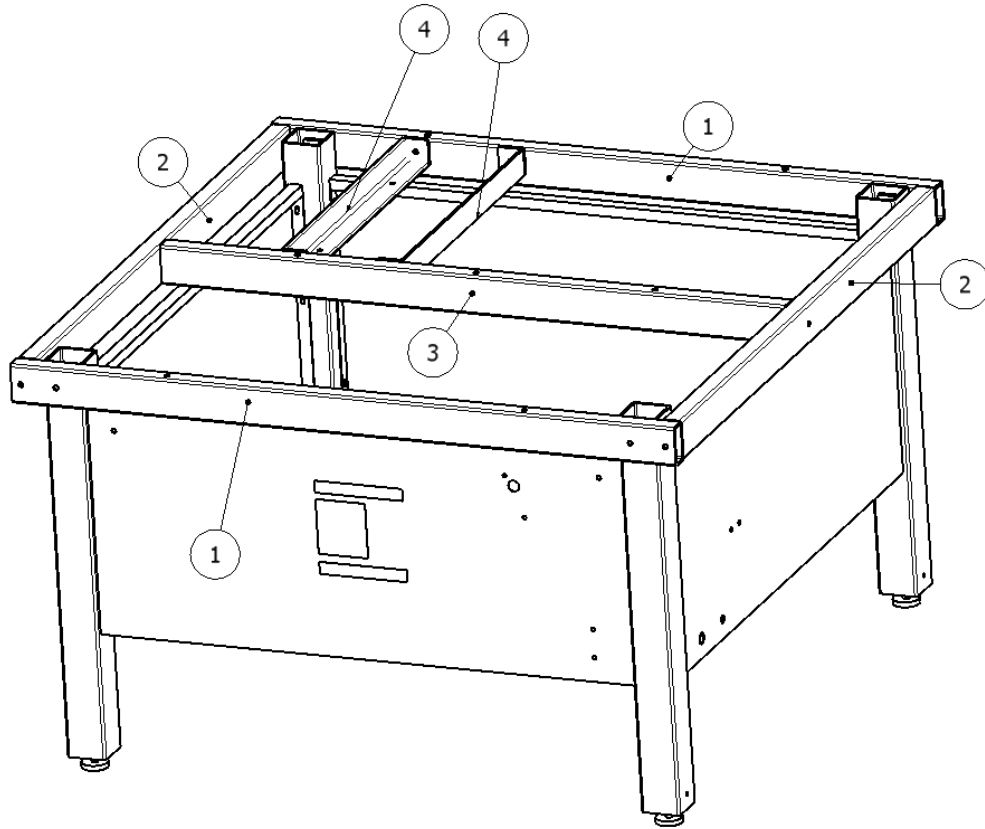


Figure 4 b

Parts List

Item	Description	Part Number	QTY
1	Tube, Front and Back	E-34001010	2
2	Tube, Side	E-34006004	2
3	Tube, Center	E-34006003	1
4	Mount, Blower	E-34006013	2

Section 4 – Replacement Parts

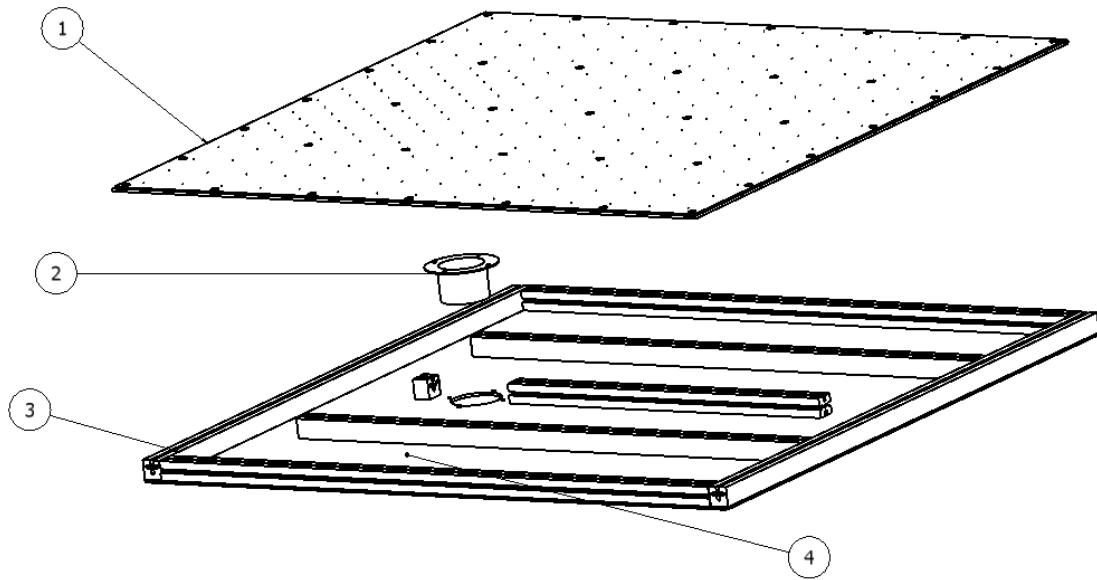


Figure 4 c

Parts List

Item	Description	Part Number	QTY
1	Top Sheet	E-34001014	1
2	Flange, Valve Mounting	E-34001050	1
3	Kit, Table Top Frame	E-34001046	1
4	Bottom Sheet	E-34001015	1

Section 4 – Replacement Parts

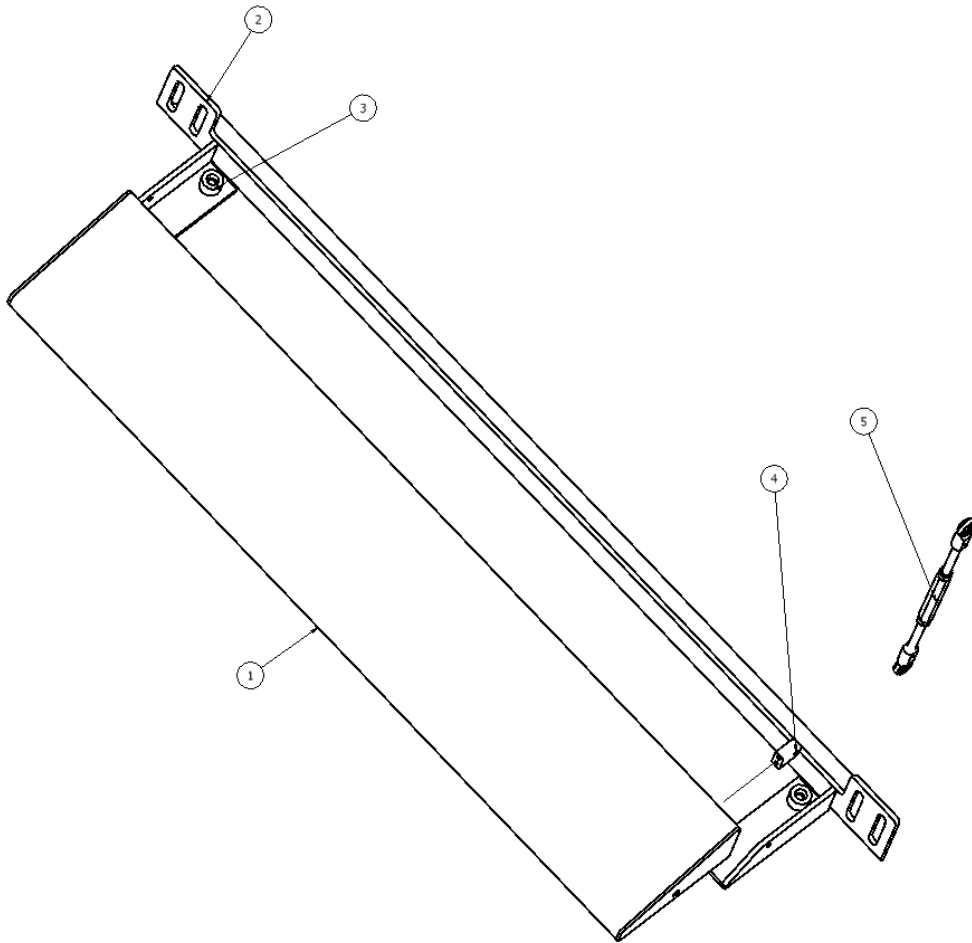


Figure 4 d

Parts List

Item	Description	Part Number	QTY
1	Foot Pedal	E-34006010	1
2	Frame, Foot Pedal	E-34006002	1
3	Bumper	E-99000018	2
4	Lever, Mount	E-34001037	1
5	Adjusting Assembly	E-34005114	1
	Pedal Pivot Screw	E-99800129	2

Section 4 – Replacement Parts

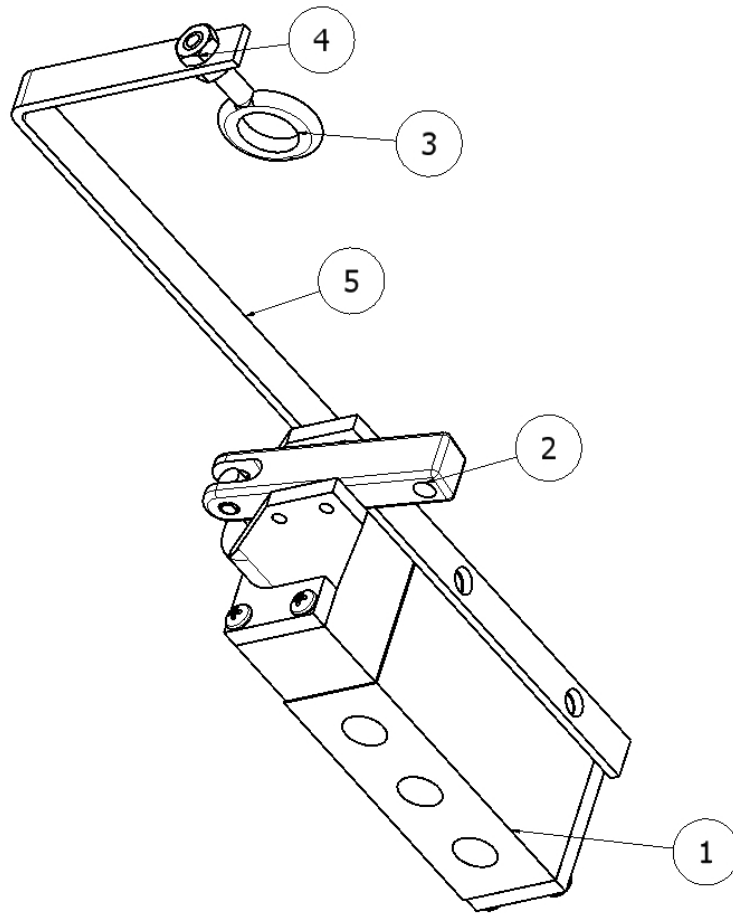
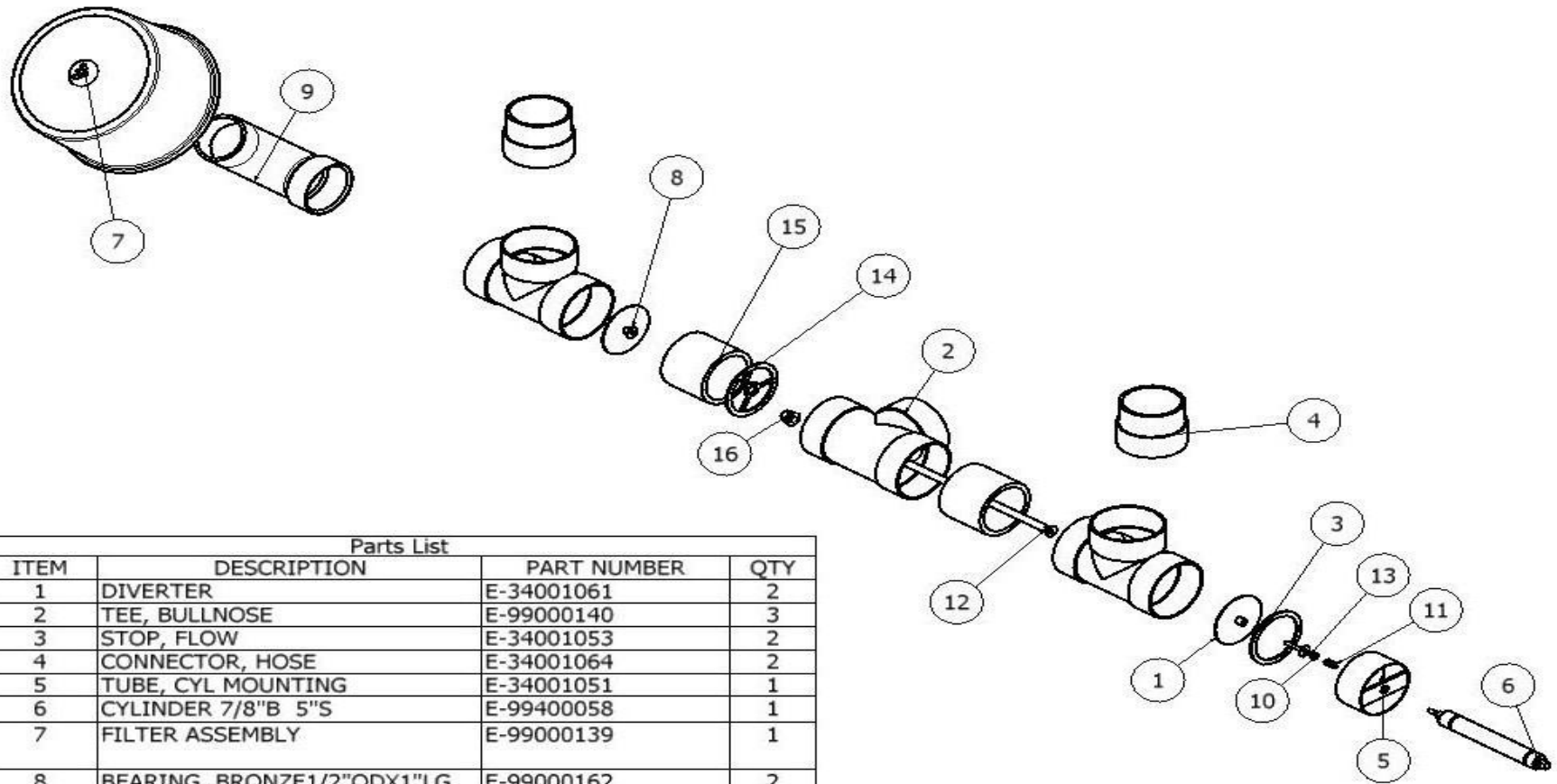


Figure 4 e

Parts List

Item	Description	Part Number	QTY
1	Valve, Lever	E-99400039	1
2	Lever	E-34001038	1
3	Eye Bolt	E-98000204	1
4	Nut ¼-20	E-99800045	2
5	Hanger, Spring	E-34002001	1
	Spring	E-99800205	1

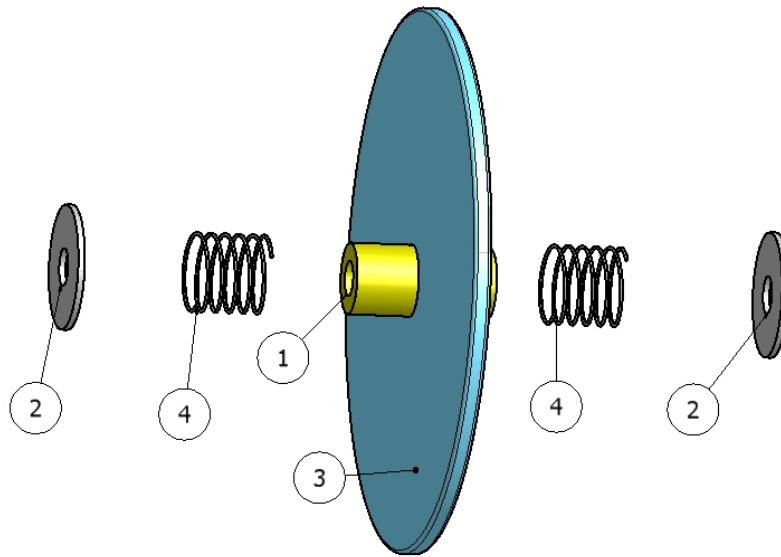
Section 4 – Replacement Parts



Parts List			
ITEM	DESCRIPTION	PART NUMBER	QTY
1	DIVERTER	E-34001061	2
2	TEE, BULLNOSE	E-99000140	3
3	STOP, FLOW	E-34001053	2
4	CONNECTOR, HOSE	E-34001064	2
5	TUBE, CYL MOUNTING	E-34001051	1
6	CYLINDER 7/8"B 5"S	E-99400058	1
7	FILTER ASSEMBLY	E-99000139	1
8	BEARING, BRONZE 1/2"ODX1"LG	E-99000162	2
9	FITTING, ELBOW 3"	E-99000159	1
10	HEX JAMB NUT 1/4"-28	E-99800201	1
11	1/4" FENDER WASHER	E-99800202	4
12	SHAFT	E-34001065	1
13	1/4"-28 x 2" STUD	E-99800203	1
14	SUPPORT, SHAFT	E-34001060	1
15	CONNECTOR, TEE	E-34001063	2
16	BEARING, SHAFT SUPPORT	E-34001062	1

Figure 4 f

Section 4 – Replacement Parts



Parts List			
ITEM	DESCRIPTION	PART NUMBER	QTY
1	BEARING BRONZE 1/2ODX1"LG	E-99000162	1
2	1/4" FENDER WASHER	E-99800202	2
3	DIVERTER	E-34001061	1
4	SPRING	E-99000164	2

Figure 4 g

Suction Table Build Sheet

Serial#		Model E-3400			
Subassembly	Part #	Description	Qty per parent	Qty per Subassembly	Comment
E-34005003		Frame, Base	1.00		
	E-30006000	Leg, Front Left		2.00	
	E-30006001	Leg, Front Right		2.00	
	E-34001005	Panel, Front		1.00	
	E-34001006	Panel, Side		3.00	
	E-99800019	Pad, Leveling		4.00	
	E-99000100	Grommet, SBR Rubber		1.00	
	E-99850011	Label, Logo, Edgetech (Clear)		1.00	
	E-99000135	Grommet, SBR Rubber		1.00	
	E-99400013	Filter/Regulator		1.00	
	E-99400014	Bracket, Wall mount, Filt/Reg		1.00	
	E-99400039	Valve, Lever		1.00	
	E-99400025	Fitting, Elbow		3.00	
	E-99400021	Muffler, Exhaust		2.00	
	E-34001038	Lever		1.00	
E-34005002		Foot Pedal, 60 X 60" No Cup	1.00		
	E-34006010	Foot Pedal, Big		1.00	
	E-34006002	Frame - Foot Pedal, Big		1.00	
	E-34001037	Lever mount		1.00	
	E-34005114	Adjusting Assembly		1.00	
	E-99000018	Bumper, SBR Rubber		2.00	
E-34005004		Frame, Top	1.00		
	E-34006013	Mount, Blower		2.00	
	E-34001010	Tube, Front and Back		2.00	
	E-34006003	Tube, Center		1.00	
	E-34006004	Tube, Side		2.00	
	E-99800002	CAP, PLASTIC, 1.5" X 3"		4.00	
E-34005005		Blower Assembly	1.00		
	E-99600061	Motor, 1 HP, 120V, 3450 RPM*		1.00	
	E-99000161	Fitting, Reducer w/4" Crimp		1.00	
	E-34001057	Flange, Blower Hose		1.00	
	E-99000118	Hose, VAC, Wire Reinforced		5.00	
	E-99000163	Blower, Housing		1.00	
	E-99600019	Switch, Toggle SPST		1.00	
	E-99600020	Heater, Overload, 12.0 A		1.00	
E-34005001		Table Top 60 X 60" no Cup	1.00		
	E-34001014	TABLE TOP, TOP SHEET		1.00	
	E-34001015	TABLE TOP, BOTTOM SHEET		1.00	
	E-34001046	Kit, Table Top Frame		1.00	
	E-99000133	Gasket, Foam		1.00	
	E-34001055	Flange, Blower Hose		1.00	
E-34005115		Valve, Flow Switching	1.00		
	E-34001063	Connector, Tee		2.00	
	E-34001064	Connector, Hose		2.00	
	E-34001065	Shaft		1.00	
	E-34001051	Cylinder, Mounting		1.00	
	E-34001053	Stop, Flow Valve Spool		2.00	
	E-34001056	Bracket, Filter		1.00	
	E-34001060	Support, Shaft		1.00	
	E-34001061	Diverter		2.00	
	E-34001062	Bearing, Shaft support		1.00	
	E-99400008	Elbow, Speed Control, Meterout		2.00	
	E-99000140	Tee, Bullnose		3.00	
	E-99000158	Fitting, Clean Out		1.00	
	E-99000159	Fitting, Elbow 90°		1.00	
	E-99000162	Bearing, Bronze 1/2OD X 1"lg		2.00	
	E-99400058	Cylinder 7/8" Bore 5" Stroke		1.00	



E-3400 QA Check List

Serial # _____

Date _____

Voltage 120 Volts 15 Amps Single Phase

Order # _____

Customer _____

Check Points	QA #1	QA #2	COMMENTS
Check for air leaks	<input type="checkbox"/>	<input type="checkbox"/>	_____
Table floats glass (4' X 4" X 1/4"thick)	<input type="checkbox"/>	<input type="checkbox"/>	_____
Table Vacuum holds glass (14" X 20" X 1/8"thick)	<input type="checkbox"/>	<input type="checkbox"/>	_____
No scratches on glass detected	<input type="checkbox"/>	<input type="checkbox"/>	_____
Blower operated for X hours	<input type="checkbox"/>	<input type="checkbox"/>	_____
Proper wiring/overload for voltage selection	<input type="checkbox"/>	<input type="checkbox"/>	_____
Foot Pedal toggles vacuum/airfloat	<input type="checkbox"/>	<input type="checkbox"/>	_____
Power switch performs properly	<input type="checkbox"/>	<input type="checkbox"/>	_____
All labels in place and serial number logged	<input type="checkbox"/>	<input type="checkbox"/>	_____

QA #1 Signature _____

QA #2 Signature _____