



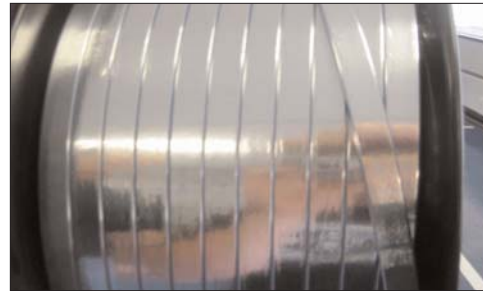
## Technical Bulletin

*Working together for better business*

### Loading Manual Reels on Reel Stands

To ensure that the foam makes contact with the liner stripper drive wheel, load the spacer one of two ways:

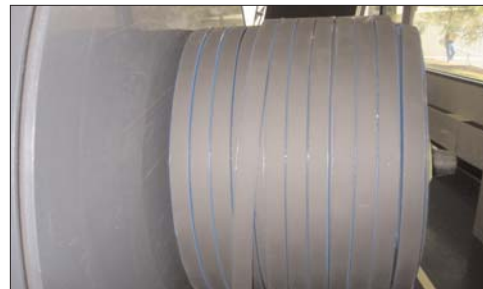
For reels with the vapor barrier coiled **outward**  
(vapor barrier is visible on top of the spacer)...



...the feed is from the **top** of the reel.



For reels with the vapor barrier coiled **inward**  
(vapor barrier on the bottom and foam on top)...



...the feed is from the **bottom** of the reel.



(\*Note: These photos are shown without the protective reel lid. Under normal operation, reel lids must be used.)