

Super Spacer® TriSeal™ lights up London lives

Super Spacer is helping to light the way for London commuters and tourists crossing Finsbury Avenue Square to Liverpool Street Station. A \$2.8 million architectural project uses Super Spacer in double-glazed lighting units covering a 215 sq. ft. lattice.

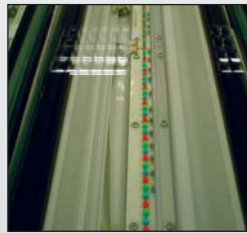


Project Light Box was designed by Maurice Brill Lighting which commissioned Artistic Licence to carry out the work, making the Broadgate area a new and popular London tourist attraction. Wayne Howells, Managing Director of Artistic Licence, researched companies which could provide the most reliable

and up-to-date technology for the light boxes, choosing Edgetech for its professionalism, long guarantees and warm edge technology.

Says Howells, "A unique project like this has to be done right. From the beginning the technical support at Edgetech was excellent. Someone was always available if we had questions."

The square is one of the world's largest exterior lighting projects using color-change LEDs. Over 650 separate glass units are used to display over 100,000 LED lights, all 5.9" wide with five different lengths to give ultimate effects ranging from 1.64 ft. to 6.5 ft. The LEDs are made up of primary



LEDs were used in the light boxes to control light intensity and colors.



colors but a computer controls color intensity producing 16 million shades. The square changes color each night.

The Project has picked up many awards since its inception, including the 2004 Winner of Exterior Lighting by the Lighting Industry and Federation, the Light and Design Award by IEIJ and a Highly Commended by FX Awards in 2005. Super Spacer has recently been added to the Project to improve on the previous aluminum spacer bar performance. 

Super Spacer® TriSeal™ wins Innovation Prize for architectural quality at Fensterbau


Super Spacer TriSeal has won the first 'Architektur Fenster Fassade' (Architecture Window Facade) innovation prize at the industry exhibition Fensterbau, held March 22 - 25 in Nuremberg, Germany. TriSeal took first place in the 'Products of High Architectural Quality' category, announced by German architecture journals XIA Intelligente Architektur and AIT, with NürnbergMesse GmbH.

The most challenging part of the competition was displaying the spacer: it had to be presented in such a way that it could bear comparison with other more "graphic" products. To this end Edgetech was helped out by Hero-Glas from Dersum in Emsland. Hero-Glas is

famous for its complex glass constructions, such as curved insulating glass. In order to tangibly demonstrate the flexibility of TriSeal, Hero-Glas designed a 3D sail made of insulating glass, thus transforming the spacer into an actual object.

Independent architects from Nuremberg, Munich and Stuttgart judged the competition. According to the jury, the "particularly flexible spacer means that heat [insulating] panes can be made in curves of virtually any shape. This offers a simple method of creating forms [that are] more technically complex and require more material in conventional production. As a result, it is now much easier to produce free translucent forms in construction."



TriSeal is specifically designed for the structural glazing market, with a continuous moisture vapor seal across the back of the warm edge spacer, and a butyl primary seal and silicone secondary seal. 

 **Edgetech 3:0**
We're there for you at every turn!

Published by Edgetech I.G. Inc.

800 Cochran Avenue
Cambridge, OH 43725
Tel. 740-439-2338 • Fax. 740-439-0121
(Toll free in North America)
800-233-4383
www.superspacer.com

**KEEP AN EYE OUT FOR
EDGETECH THIS YEAR!**

AIA 2006

June 8-10, 2006
Los Angeles, CA
www.aia.org



GlassBuild America 2006

September 19-21, 2006
Las Vegas, Nevada
www.glassbuildamerica.com

**GlassBuild
AMERICA**
THE GLASS, WINDOW & DOOR EXPO
SPONSORED BY NCA, CANA, AAMA, SCA, SENA

Glasstec 2006

October 24-28, 2006
Dusseldorf, Germany
www.glasstec-online.com

